

*A rental community created to meet
the housing needs of Concord residents.*

PARMENTER PLACE

Welcome Home

Home is more than just a place to live. It's where you make plans, celebrate what you've accomplished, and imagine what you'll do next. Home is comfortable, well designed, and welcoming. Make your home Parmenter Place in Concord, New Hampshire. This beautiful new rental community is nestled on a quiet street just a few minutes by car or public transportation from the heart of Concord. Parmenter Place is designed to provide the ideal combination of living space, amenities, convenience, and affordability.

Parmenter Place provides a unique opportunity for its residents. Its selection of 25 two-bedroom, and three-bedroom townhouse style rental homes, including two single-level units which are fully wheelchair-accessible, make it the ideal setting for couples and families.





Parmenter Place includes features and amenities you won't find in many townhouse communities, such as fully applianced kitchens with breakfast bar on-site laundry facilities and secure storage areas. Living areas are fully carpeted, and three different floor plans mean you'll have plenty of options for the way you live. Maintenance is available 24 hours a day, seven days a week. The Parmenter Place promise: you get the comfortable, convenient, and affordable home you need with all the features you want.

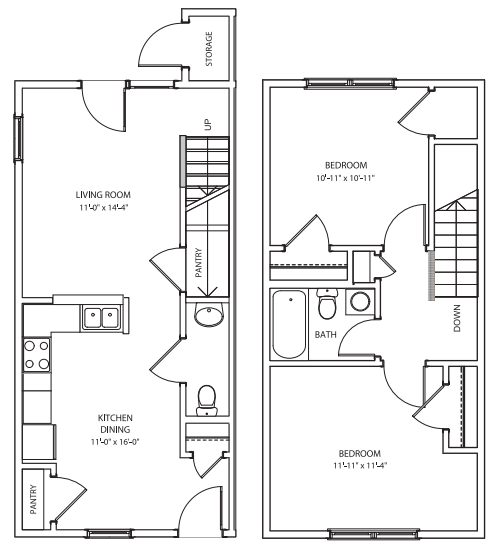
Amenities

This brand new Parmenter Place community, located within the Concord School District, includes an on-site community liaison, 24/7 emergency maintenance, rental rates that include heat and hot water and a convenient electronic rent payment option.

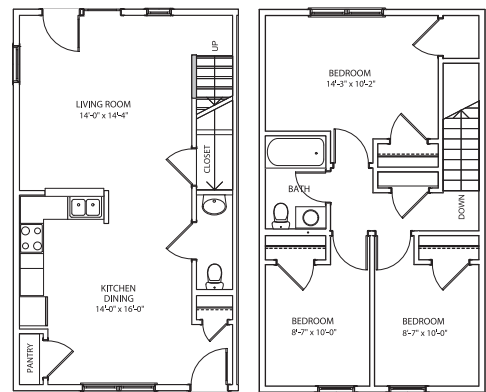


Parmenter Place is specifically designed for families who meet certain household income limits. For complete details on eligibility guidelines, please call 603-224-4059.

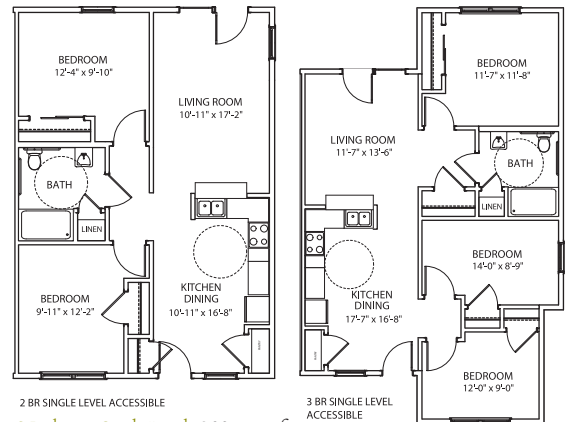
- All units include:*
- New construction*
 - Energy Star certified*
 - Fully-applianced kitchen with breakfast bar*
 - Carpeted living areas*
 - Cable/Internet ready*
 - All units are non-smoking*
 - Secure on-site mail delivery*
 - Laundry facilities on site*
 - Trash disposal on site*
 - Community liaison on site*
 - 24/7 emergency maintenance*
 - Snow removal*
 - 2 assigned off-street parking spots*
 - Fully-accessible units available*
 - Residential fire suspension sprinkler systems*



FIRST FLOOR 2 BR
SECOND FLOOR 2 BR
2-Bedroom Townhouse 967 square feet
1 full bath, 1 half bath



FIRST FLOOR 3 BR
SECOND FLOOR 3 BR
3-Bedroom Townhouse 1175 square feet
1 full bath, 1 half bath



2 BR SINGLE LEVEL ACCESSIBLE
3 BR SINGLE LEVEL ACCESSIBLE
2-Bedroom Single Level 866 square feet
1 ADA accessible unit, 1 sight & hearing impaired unit, 1 full bath
3-Bedroom Single Level 1000 square feet
1 ADA accessible unit, 1 full bath

PARMENTER PLACE

CONCORD HOUSING AND REDEVELOPMENT

The Concord Center | 10 Ferry Street | Suite 302 | Concord | New Hampshire | 03301
603-224-4059 | fax 226-2941

